



## Cyclone Dust Collectors

ProVent Tornado Cyclones are unique because they incorporate additional, key design features into the standard cyclone operating method for higher efficiency.

The Tornado has no moving parts other than the fan and no internal filter to replace making it the most maintenance free dust collection available.

### Standard Features

- High-Efficiency Design**  
 Using a special high-efficiency length to diameter ratio design, the Tornado TXE is capable of approximately 90% efficiency down to 15-20 micron particles.
- All Welded Heavy Sheet Steel**  
 7 Gauge Steel will stand up to years of daily abuse
- Involute Inlet**  
 Increases efficiency by introducing particulate along the side wall of the cyclone
- Structural Steel Framing and Base Plates**  
 Superior strength increasing the longevity of the equipment.
- Urethane Mastic External Coating**  
 Durethane DTM by PPG chemically resistant and extremely durable. Provides excellent corrosion resistance with superior color and gloss retention.
- Accusizing**  
 Motor and fan are sized specifically for your application to increase efficiency and performance.

### AIRFLOW RANGES

Model	LOW END CFM @ -2" wg	PEAK EFFICIENCY CFM @ -4" wg	HIGH END CFM @ -6" wg
TXE-32	440	586	732
TXE-46	694	919	1145
TXE-60	840	1113	1386
TXE-76	1174	1555	1937
TXE-93	1360	1802	2244
TXE-125	1778	2355	2933
TXE-160	2250	2981	3712
TXE-200	2778	3677	4577
TXE-260	3674	4917	6161
TXE-330	4694	6219	7745
TXE-400	5840	7738	9636
TXE-510	7100	9407	11715
TXE-620	9000	11925	14850
TXE-760	10560	13992	17424
TXE-920	12840	17013	21186
TXE-1120	16000	21200	26400

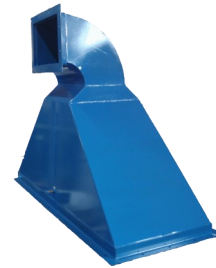


## Popular Options



Adding a second TXE will increase the efficiency from 90% to 99% on particles 15-20 micron

Exhaust terminations and transitions



Motor Controls: 460V/3Ph/60Hz, NEMA 4/12 Enclosure, IEC Starter with Electric Overload Relay, Disconnect, Pushbuttons, Function Lights, 120v Transformer

If superior filtration is needed, there are many after-filter options available such as bag houses, cartridge collectors and HEPA filters.

