



Ducted Applications up to 3,000 CFM

The most efficient wet dust collectors on the market, the Uni-Wash series of wet dust collectors are capable of collecting dust down to 3 micron in size consuming only 3" wg. static pressure

Wet type dust collection is required for the safe collection of combustible metal dust. Wet Type Dust Collection has also been used effectively in many other difficult applications in place of cartridge collectors. ProVent's unique scrub design has been an industry standard for over 40 years and continues to lead the industry in Wet Type dust Collection efficiency.

Standard Features

- **Integral High Efficiency Fan Assemblies**
 - Injection Molded GRP Polyamide, Backward Curved Airfoil, Spark Resistant, Corrosion-proof.
- **Photohelic Gauge**
 - Measures differential pressure across the scrub to monitor airflow and water level.
- **7, 10 and 12 Gauge Steel Construction**
 - Solid welded heavy steel for superior strength and longevity.
- **304 Stainless Steel Scrub Components**
 - Superior construction where it is needed the most.
- **2-Part Epoxy Internal Tank Coating**
 - AmerLock-2 by Ameron provides exceptional corrosion protection in harsh industrial and marine corrosive environments.
- **Urethane Mastic External Coating**
 - Durethane DTM by PPG chemically resistant and extremely durable. Provides excellent corrosion resistance with superior color and gloss retention.
- **99% Efficient consuming only 3" wg**
 - The most efficient wet dust collector available which has become an industry standard over the past 40 years.

COMBUSTIBLE METALS

ProVent's line of Uni-Wash Wet Type Downdraft Bench Dust Collectors meets or exceeds NFPA #484 for combustible metals including:

- Aluminum Dust
- Titanium Dust
- Magnesium Dust
- Zirconium Dust
- Tantalum Dust



BEYOND COMBUSTIBLE METALS

FOOD PROCESSING

ProVent has provided the food industry and others with 100% 304 Stainless Steel Wet Type Dust Collectors for the collection of a variety of airborne contaminants. If you think your application might benefit from the best designed, most efficient wet type dust collector on the market, look to ProVent and water filtration.

PHARMACEUTICAL

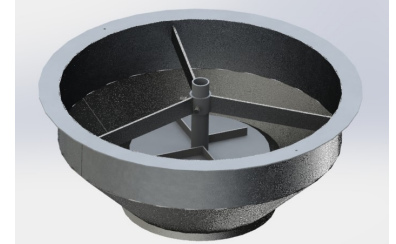
Utilizing water as a filtration device for pharmaceutical and biochemical dusts has its benefits. Beyond the cost savings of not having to replace filter cartridges, employee exposure to potentially hazardous dust during this maintenance operation is relieved.



Uni-Wash—The Industry’s Leading Scrub Technology

The Uni-Wash scrub technology has been continually manufactured for over 40 years. This tried and true “orifice / impingement” technology offers many benefits unmatched by other manufactures of wet type dust collection. Utilizing airflow to produce the scrub means that there are no pumps or nozzles to clog. Additionally, this makes our wet type dust collectors more energy efficient requiring lower horsepower than other designs.

The stainless steel components of the Uni-Wash scrub are designed with a large opening that will never clog and can be cleaned effectively reducing maintenance costs. The use of the optional Sani-Ball cleaning system reduces maintenance even further.



Efficiencies of up to 99% can be reached due to the incredible turbulence created by the Uni-Wash scrub. In this turbulence, a high rate of particulate to water contact is made increasing the efficiency with a mere pressure drop of 3” wg. static pressure.

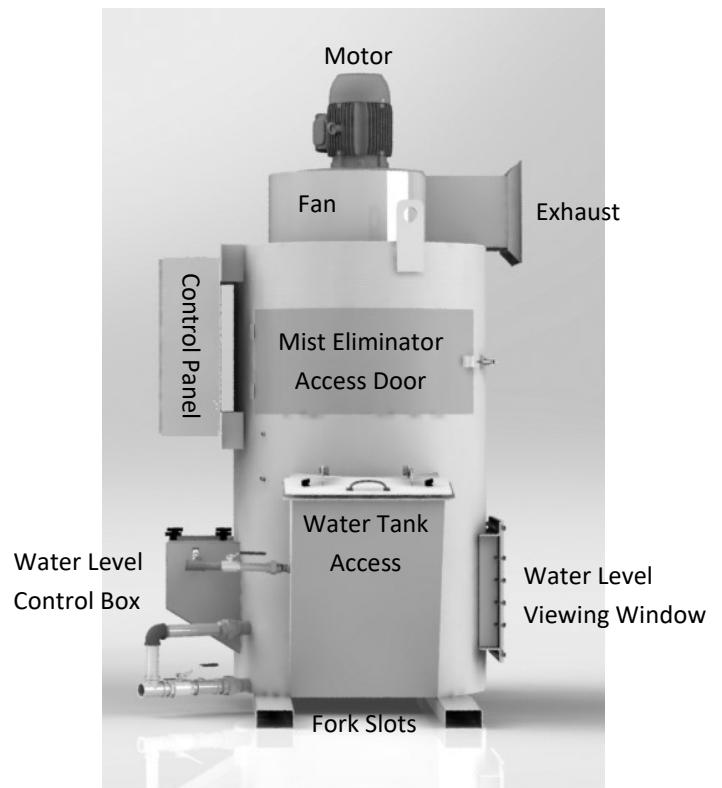
A WORD ABOUT NFPA 484

NFPA 9.4.12.6.1 “The power supply to the dust-producing equipment shall be interlocked with the airflow from the exhaust blower and the liquid-level controller of the collector so that improper functioning of the dust-collection system will shut down the equipment it serves..”

ProVent Delivers: Both water level and motor controls are integrated into a single, custom control panel which includes a transformer and disconnect features.

The NFPA Safety Package option integrates airflow monitoring, audio/visual alarms, a positive vent fan and auxiliary contact into the control panel. The auxiliary contact provides the customer the ability to connect the dust producing equipment to the dust collector per NFPA guidelines

Standard Uni-Wash UC 500—3,000 CFM



Popular Options



Uni-Wash HMI

Includes touchscreen interface w/ graphics, ultrasonic water-level control, variable frequency drive, 24v components, E-Stop, safely shuts down on low / high water, upgraded paint color and decals.

Uni-Wash PRO—NFPA Compliant

Includes everything in the Uni-Wash HMI plus NFPA compliance features. NFPA compliant alarms, shutdown on low airflow, all necessary temperature inputs as required for NFPA compliance, auxiliary relay to shut down dust emitting equipment when dust collector shuts down.



All ProVent equipment is available in painted or unpainted stainless steel. Popular with the food processing industry, stainless steel provides cleanliness and longevity to the equipment.

The Sani-Ball cleaning system uses powerful 316 stainless steel spray nozzles to simplify and improve the cleaning process.



Ducted Systems < 4000 CFM can be raised on legs and drained from the bottom of the dust collector. This option is ideal for water soluble applications.

ProVent Silencers reduce the noise level produced by the exhausted air. ProVent manufactures silencers that are perfectly matched to the collectors they serve.



sales@proventilation.com

P. 800-610-6010

Manufactured in Harbor Springs, Michigan



Uni-Wash UC (500 CFM—3,000 CFM) Specifications

	UC-5	UC-10	UC-20	UC-25	UC-30
Air Flow	500	1,000	2,000	2,500	3,000
Ext. SP (in. Wg)	5	4	6	5	4
Motor / Fan RPM	3450	3450	3450	3450	3450
TEFC Motor, HP	1.5	2	5	5	5
Drive Config	Direct	Direct	Direct	Direct	Direct
Primary Voltage	460Volt 3 Phase 60 Hertz				
Full Load Amps	2.6	3.4	7.6	7.6	7.6
Dry Weight (lbs)	400	650	720	850	960
Tank Capacity (US GAL)	20	42	87	97	113
Fresh Water Connection	3/4" NPT, Female				
Drain Connection	1 1/4" NPT, Female				
Integral Fans	AMCA Rated Radial Mild Steel	Injection Molded GRP Polyamide Backward Curved Airfoil Spark Resistant, Corrosion-proof, Stronger than Steel / Half the Weight / Lower HP			
Housing Construction	7, 10 and 12 gauge, 3/16" and 1/4" plate, Solid Welded				
Scrub Components	304 Stainless Steel, Scrub Cone, Target Plate, Adjustable Riser, Spider Support Assembly				
Internal Tank Coating	AmerLock-2 by Ameron is a 2-Part Epoxy that provides exceptional corrosion protection in harsh industrial & marine corrosive environments				
External Coating	Durethane DTM by PPG is a direct-to-metal Urethane Mastic coating that is chemically resistant and extremely durable. It provides excellent corrosion resistance and has superior color and gloss retention, excellent adhesion, UV protection. ProVent Blue standard, custom colors optionally available.				
Water Level Control	Low Maintenance mechanical float type with auto shutdown				
Motor Controls	NEMA 12 Start/Stop Station with overload protection, Optional Face Mounted Combination Starter Package with Disconnect, Buttons, Lights on units purchased with Electronic, 4-Point Water Level Control. Optional NFPA Package adds Airflow Switch with Auxiliary Contact for connection to dust producing equipment, Horn, Light for NFPA compliance. Variable Frequency Drive available.				