



Cartridge Dust Collectors

Intercept™ PV-Series Vertical Cartridge Dust Collectors capture and remove most industrial and foundry dusts from exhaust system air. A unique CAM-LOC cartridge locking mechanism securely seals the cartridge header plate to the tube sheet to prevent dust bypass. A variety of system configurations are available to accommodate most space restrictions. Modules are available in one, two or three cartridge widths, and depths up to four cartridges.

Standard Features

- **Continuous Pulse Filter Cleaning**
Static pressure is monitored and the cartridge filters pulsed clean when necessary
- **All Welded Heavy Sheet Steel**
12 Gauge Steel will stand up to years of daily abuse
- **Filter Racking System**
Provides a tight and even seal between the filter and fan assembly
- **Vertically Mounted Filters**
Vertically mounted filters clean better when pulsed allowing gravity to settle particulate to the bottom of the dust collector.
- **Urethane Mastic External Coating**
Durethane DTM by PPG chemically resistant and extremely durable. Provides excellent corrosion resistance with superior color and gloss retention.
- **Welded Couplings**
1" NPT for fire control equipment.
- **Photohelic Switch / Gauge**
Mounted in a NEMA 12 control panel.

FILTRATION OPTIONS

FIRE RETARDANT NANO WEB

STANDARD

Protects from errant sparks making contact with the filter and causing a fire. Able to capture smoke and fumes with particle size down to .3 micron in size.

FIRE RETARDANT

Protects from errant sparks making contact with the filter and causing a fire. Efficient for grinding and sanding dusts > 3 micron.

NANO WEB

Nano Web filter cartridges are able to capture smoke and fumes with particle size down to .3 micron in size.

POLYESTER

Polyester filters provide excellent filtration and are the most efficiently cleaned when pulsed.

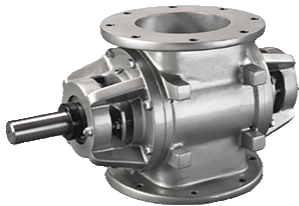


Popular Options



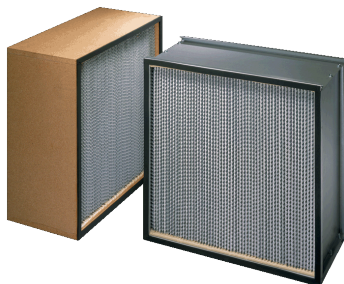
Explosion Vents are available on all Intercept PV dust collectors. Explosion Vents offer protection from unsafe pressure in dust collection systems

ProVent Silencers reduce the noise level produced by the exhausted air. ProVent manufactures silencers that are perfectly matched to the collectors they serve.



Rotary Air Lock Valves allow collected material to be continually moved from the hopper to a storage device without the interruption of air pressure.

NFPA requires that an explosion isolation device be installed on all suction side ducts that transport material with a KST value above zero.



If superior filtration is needed, a HEPA after-filter is available raising efficiencies to 99.999% down to .3 micron.

Specifications

Intercept PV	PV34-3	PV34-4	PV34-6	PV52-6	PV52-9	PV52-12	PV52-16	PV52-24	PV52-32
Standard Filter	NANO FIBER - FIRE RETARDANT - MERV 15 EQUIVANT								
Pulse Controller	PULSE VALVES: ENCLOSED TIMER WITH DIFFERENTIAL PRESSURE SWITCH [NEMA 4] 115V, SINGLE PHASE, INCLUDES DIGITAL DP GAUGE, CONTROL PANEL READY TO ACCEPT 110V CONNECTION, SHIPPED LOOSE FOR END USER CONVENIENCE								
Compressed Air Requirement	80-90 PSI REQUIRED HOOK UP 1" NPT COUPLING								
Number of Pulse Valves	1	2	2	4	6	6	8	12	16
Number of Filters	3	4	6	6	9	12	16	24	32
Filter Height	34	34	34	52	52	52	52	52	52
SQ. FT. of Media	705	940	1,410	2,160	3,240	4,320	5,760	8,640	11,520
CFM @ Air to Cloth Ratio 1.5:1	1,058	1,410	2,115	3,240	4,860	6,480	8,640	12,960	17,280
CFM @ Air to Cloth Ratio 2:1	1,410	1,880	2,820	4,320	6,480	8,640	11,520	17,280	23,040
CFM @ Air to Cloth Ratio 2.5:1	1,763	2,350	3,525	5,400	8,100	10,800	14,400	21,600	28,800
Filter Racking	VERTICALLY MOUNTED FILTERS, SEALING VIA DUAL RAIL PUSH CAM LOCKING ASSEMBLY								
Fan	DIRECT DRIVE, BACKWARD INCLINED WELDED MILD STEEL FAN								
Housing Construction	10 GA. WELDED STEEL								
External Coating	DURETHANE DTM BY PPG: URETHANE MASTIC COATING: COLOR - VENT BLUE								
Fire Control	.5" NPT FITTINGS WELDED INTO HOUSING FOR THE CONNECTION OF FIRE CONTROL EQUIPMENT								